

# 12

## Introducing **RoadEng**<sup>®</sup> with **Softree Optimal**

### Inspired by your feedback, built for your projects.

RoadEng 12 is inspired by real user feedback. We listen to your challenges and adapt our software to make design easier: now with enhanced hydrology tools, smarter intersections, and the new Path Explorer AI for networks. RoadEng is built to make your everyday work faster, simpler, and more optimized than ever.



#### Path Explorer AI:

- Batch Processing
- Speed Improvements
- Waypoint (A-B-C)
- Networks
- Inclusion of existing roads & tangents



#### Terrain Module:

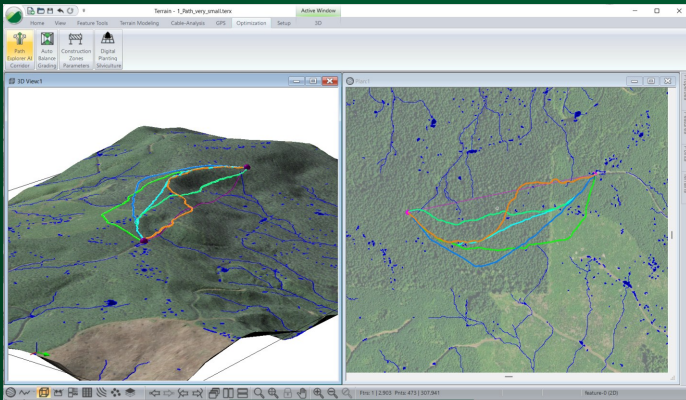
- Grading Improvements
- Polygonize Tools
- Digital Planting
- Buffer with Benching
- Buffer to Polygon
- Buffer visualization Improvements



#### Location Module:

- 3D Road Cuts
- Hydrology in Location
- Join Alignments
- Reverse Alignments
- Intersection Tool
- New Templates
- 3D View in Multiplot
- Linework by Alignment
- + more!

# Path Explorer AI Improvements\*

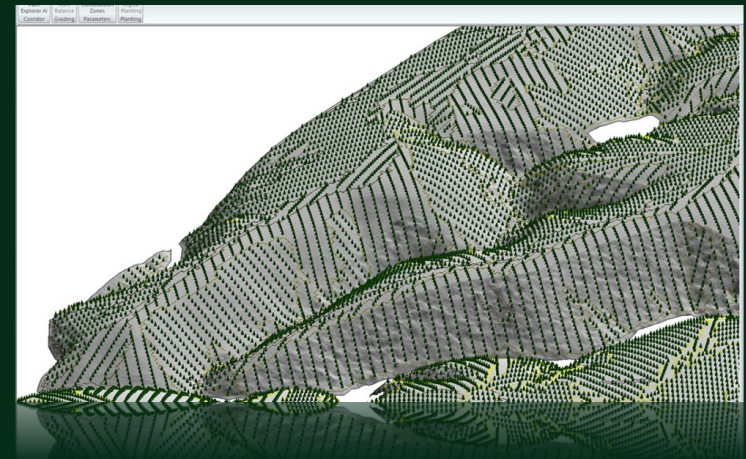
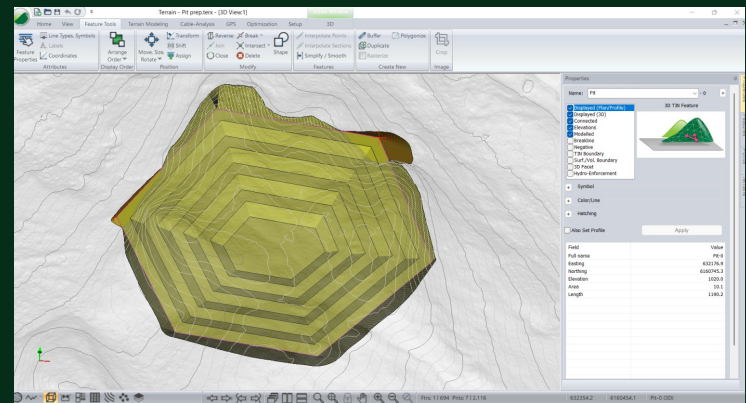


\*Requires a valid Softree Optimal license with active support/subscription.

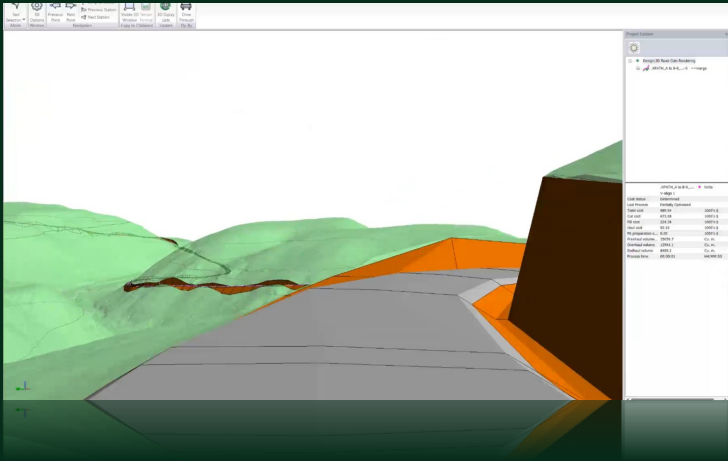
- **Better Handle Challenging Terrain**—stronger algorithms allow Path Explorer to runs 5-10x faster in difficult terrain.
- **Batch Process**—batch processing of multiple Path Explorer segments in one run.
- **Waypoints (A-B-C)**— create Path Explorer outputs through required waypoints (including control points).
- **Bolder Linework**— improvements to Path Explorer outputs & visualization
- **Networks** — ability to generate road alignments for a full network, including existing roads.

# Terrain Module Improvements

- **Buffer to Polygon Tool**— Quickly generate buffer polygons around existing features. Ideal for defining areas such as stream corridors, enabling seamless integration into Path Explorer Construction Zones.
- **Grading Enhancements**— Improved grading tools make it easier to understand direction and apply grading correctly—eliminating confusion around inside vs. outside grading.
- **Polygonize Function**— Generate polygons directly from the TIN based on elevation, slope, or aspect. Useful for defining No-Go Areas in Path Explorer, enhancing visual aids, and supporting Digital Terrain and Planting tools.
- **Digital Pre-Planting**— Plan tree planting with RoadEng to account for mechanical harvesting limits. Automatically create planting features on steep and moderate slopes that respect operational constraints.
- **Multiple Buffer Feature** – Create a series of features with a single click for easier creation of benches walls and pits.



# Location Module Improvements



- **3D Viewpoints**— Easily create 3D viewpoints in the Location module, add them to a multiplot, and explore them directly in the 3D view for better visualization and project insight.

- **3D Road Cuts** — Get instant 3D road cut visualization right in the Location module. No exports, no extra steps—just faster, clearer results.

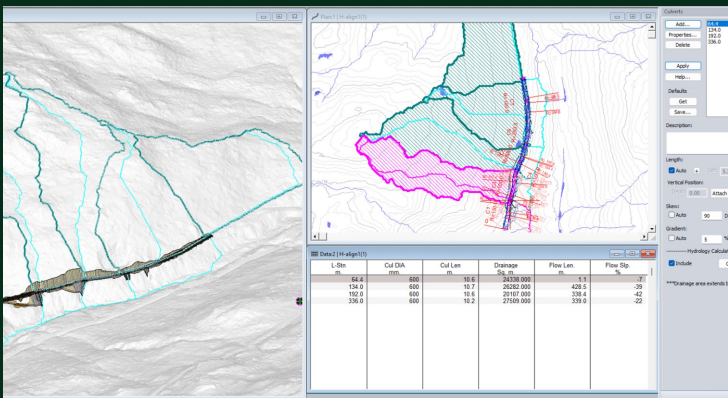
- **3D Image Draping** – Drape your plan imagery in Location module.



- **Linework by Alignment** – Control linework by individual alignments. Define linework settings by road class. Create better outputs.

- **Join Alignments**— New Function to connect alignments together. Ideal for long projects where design work is completed in sections.

- **Reverse Alignment** – One click reversal of alignment direction and stationing. One of the most common support requests, now easier than ever.



- **Hydrology in Location** – Building on the redesigned hydrology tools introduced in V11, V12 brings them into the Location module. Tools include Streams / Ponds and Drainage Area to a Point (ideal for culvert catchments). Account for drainage as you design.

## Support-Exclusive Features

Unlock powerful tools designed to elevate your workflow and maximize your investment in RoadEng and Softree Optimal. Our continued expansion of support-exclusive offerings reflects our commitment to helping clients succeed while driving innovation forward.

**Included with annual support (perpetual licenses) or 1-year subscription licenses:**

- Path Explorer AI (*Softree Optimal*)
- Intersection Tool
- Digital Pre-Planting (*Softree Optimal*)
- Hydrology Tools in Location
- Smart Curves (*Softree Optimal*)

## Systems Requirements

- Windows 7, 8, 10, or 11 Operating System
- 4 GB system RAM (8 GB recommended)
- Minimum 800 x 600 resolution (more recommended)
- Processor or motherboard built-in video is adequate
- 1 GB disk space

## File Format Compatibility

- **IMPORT:** .TIF, .JPG, .BMP, .SHP, Mr.SID, ECW, LAS, .LAZ, .GPX, .GML, .ASCII, Excel, .DXF, .DWG, USGS DEM, SDTS, .TXT, .CSV, LandXML, .DGN, .KMZ, .KML, .POL, .JP2
- **EXPORT:** .SHP, .ASCII, Excel, .DXF, .DWG, .JPG, .DGN, .KMZ, TIF, JPG, BMP and LandXML.

## Ready to explore RoadEng V12?

Contact us for a live demo or trial today!



COMING SOON



Watch the Preview



Book a Live Demo

**Call us Toll Free at** 1.866.519.6222

1.604.519.6222 (International)

**Email us at** [sales@softree.com](mailto:sales@softree.com)

**Visit us at** [www.softree.com](http://www.softree.com)

Suite 215 - 1000 Roosevelt Crescent

North Vancouver, B.C., Canada, V7P 3R4

# 12