



Civil Engineering

EDUCATIONAL LICENSE PROGRAM



Program Overview

The Softree Educational Licensing Program is designed to address the needs of academic and educational institutions.

The program, with essentially free pricing, makes it economically practical and very simple for academic and educational institutions to acquire and use Softree products on and off campus.

Used by thousands of consultants, counties, companies, universities, and government organizations worldwide. Educators love the simplicity, ease-of-use, speed and power of our products. Stand-alone or compatible with other civil design software, RoadEng® and Softree Optimal add speed and power to corridor design projects and to the classroom!

In This Booklet:

- Program Overview & Benefits
- Academic License Options
- Software Overview: RoadEng
- Software Overview: Softree Optimal
- Teaching & Support Resources
- Get Registered



Program Overview & Benefits

Ideal for teaching geometric road design. Unlike many other civil design software options, our products focus on engineering over drafting. This enables educators to easily demonstrate the principles of geometric road design in a civil software environment.



Quick learning curve

Have your students up and running in a few hours, not years... 90% of users do not require formal training.



Focus on engineering

Designed to focus on engineering over drafting, our products can help you illustrate engineering principles.



It's Free!

Students and Universities can get free access to software and training materials.



Design start to finish

Allow your students to obtain a global view of corridor design, from survey data entry to output of finished designs.



Compatible

Compatible with other engineering programs. Compatible with industry. Equip students with valuable software knowledge that can be applied in a variety of work environments.



Academic License Options

There are three types of licensing options available:

	EDUCATOR Academic Classroom Licenses	INDUSTRY Academic Industry-Use Licenses	STUDENT Individual Learning Licenses
Intended Use	Academic Classroom Licenses (Annual lease): restricted to use by students and teachers in connection with on-campus classroom teaching only.	We recognize that many educators have industry-use applications that are outside their on-campus teaching and research functions. The Academic industry-use licenses are available exclusively to those educators requiring commercial licensing options.	Individual Learning Licenses (semi-annual lease): restricted to use by students on and off campus with work from home rights. *Commercial use (including internships) is strictly prohibited.
What's Included:	<p>The Lease includes the maintenance package, including free software updates, upgrades, and ongoing access to technical support.</p> <p>Software options:</p> <ul style="list-style-type: none"> • RoadEng Civil Engineer • Terrain Tools 3D • Softree Optimal 	<p>The license includes a 3-month tech support package. Annual maintenance can be purchased for a standard fee.</p> <p>Software options:</p> <ul style="list-style-type: none"> • RoadEng Civil Engineer • Terrain Tools 3D • Softree Optimal 	<p>The Lease includes access to basic technical support.</p> <p>Software options:</p> <ul style="list-style-type: none"> • RoadEng Civil Engineer • Terrain Tools 3D • Softree Optimal
Pricing	<p>FREE.</p> <p><i>*Hardware costs apply (Network Keys etc.)</i></p>	<p>50% discount off list-prices.</p> <p><i>*Additional discounts may apply.</i></p>	<p>FREE.</p>
# of users	Network options up to 100 users.	Single-use key or password options.	Single computer password access only.
Term	Lease — Classroom licenses are time-limited, but may be renewed by an instructor for use during another semester upon request.	Perpetual licensing	6-month lease.
Eligibility (Proof) Requirements	Letter indicating use on university letterhead OR link to faculty bio / course description on institution website.	Valid educational institution email address.	Student ID.



Software Overview: RoadEng Civil Engineer

Designed for busy engineers, RoadEng® is built to make civil design projects faster and easier. RoadEng is a complete civil design package for surveying, terrain modeling, corridor design and site planning.

Key Benefits:

- ✓ Quick learning curve
- ✓ Real-time interactivity
- ✓ Complete civil design tool set
- ✓ Ideal for the classroom.



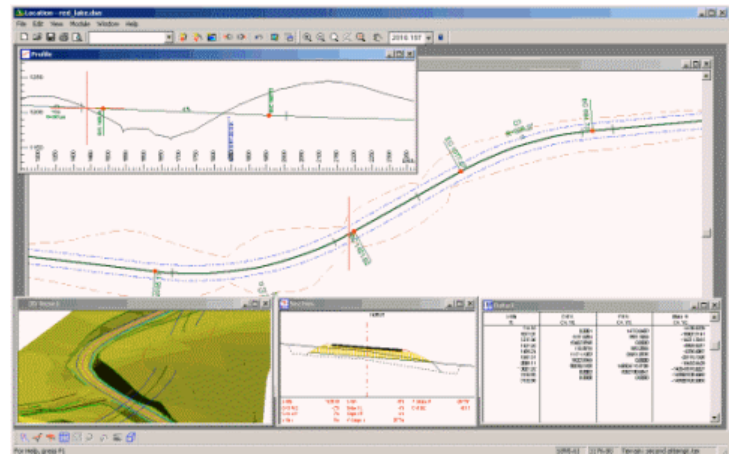
IDEAL FOR TEACHING GEOMETRIC DESIGN.

RoadEng is powerful without complexity. It's fast, handling large LiDAR data sets with ease, managing construction costs for large civil projects, and providing real-time interactivity for its users.

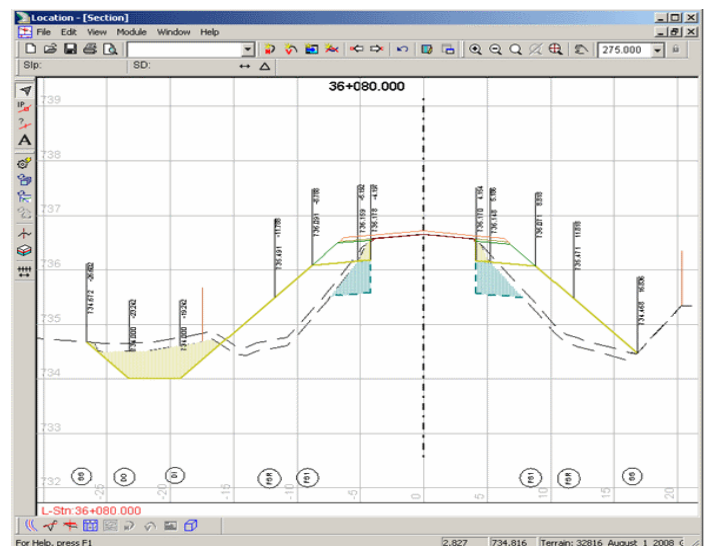
Educators don't need to spend valuable course time learning and teaching complicated software. RoadEng helps students understand 3-dimensional aspects of road design quickly.

Keep it simple. Four windows are available for road design: Plan, Profile, Cross Section, and Data. Each window is customizable and instantaneously reflects changes made in all other windows.

Let students explore. Creating and changing the horizontal and vertical alignments is quick and easy. IP coordinates can be created and edited interactively. Curve panels allow users to input curve parameters such as design speed, super-elevation, transition lengths, K-values, and sight-stopping distances. Explore the impacts of changes to the alignment on the cross-section template.



Profile, Plan, Cross Section, Data & 3D Windows



Cross Section Window

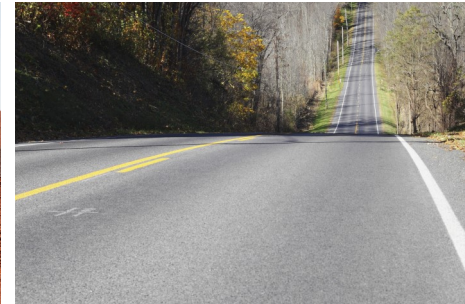


Software Overview: Softree Optimal

The easiest way to reduce earthwork costs. Vertical alignment optimization software saves time & money with automated corridor design. Put your students in touch with cutting-edge technology that minimizes earthwork costs. Demonstrate how manipulating design parameters affect construction cost.

Key Benefits:

- ✓ Save engineering time
- ✓ Minimize earthwork costs
- ✓ Quickly compare design variables
- ✓ Understand costs



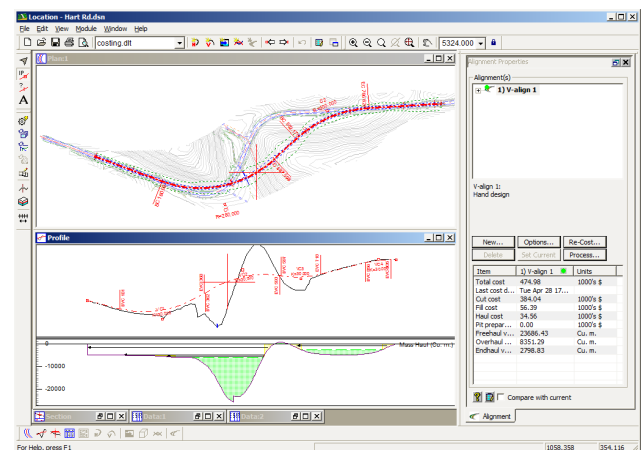
A NEW WAY TO THINK ABOUT CORRIDOR DESIGN. A NEW WAY TO TEACH.

Based on 5 years of cutting-edge mathematical research in conjunction with the University of British Columbia, Softree Optimal proposes a new way of thinking about corridor design.

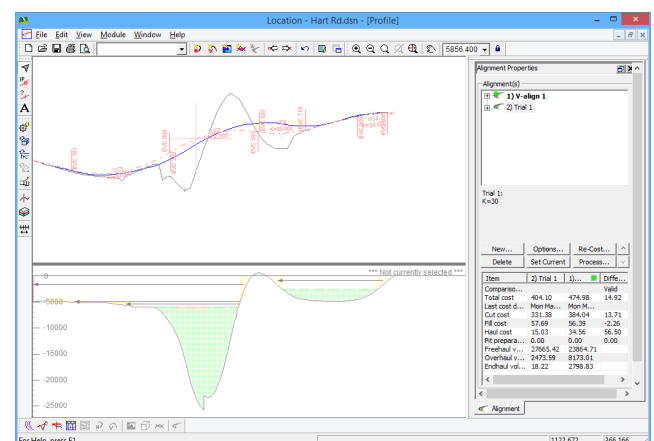
Softree Optimal minimizes road and corridor earthwork costs. It saves engineering time and construction expenses. Using sophisticated mathematics, it solves the complex 3D problem of minimizing excavation, embankment and haulage while meeting design constraints and standards.

For the classroom, Softree Optimal allows students to generate the optimal vertical alignment based on a given horizontal alignment and various design constraints and to explore the impact of design changes like never before.

Softree Optimal is fully-user controllable. All constraints are entered and managed by the engineer using the program. Curvature, grading, and a variety of other constraints are available to handle drainage, special fill conditions and existing utilities. The material movement costs used to calculate an Optimal lowest cost are also defined by the user.



Understand the cost impact of changes to the Horizontal Alignment



Vertical Alignment Optimization Panel



Teaching & Support Resources

The easiest civil design software you'll ever use...or teach.

Resources available to learn & teach:

- Training materials and examples
- Training videos & webinars
- Software support & training for educators

How to Get Started

Interested in bringing Softree products into your classroom? Here's our recommended approach:

- 1** Evaluate your product options
 - Get a free online product demonstration
 - Experience the product on your own through a trial license
 - Explore our online resources and knowledge base
- 2** Contact our sales team:
 - Email: sales@softree.com
 - Phone: 604-519-6222 (international)
 - Phone: 1-866-519-6222 (North America toll-free)
- 3** Submit proof of your eligibility (see *page 3*)
- 4** Our team will work with you (and your IT Dept) to get your classroom up and running.