

# RoadEng<sup>®</sup>

## FOREST ENGINEERING Software

Good engineering and planning can  
reduce the costs & environmental  
impact associated with forest  
operations, road building,  
maintenance and use.

That's where we can help.

### Better Roads with Less Planning Time

- ✓ New Road Layouts
- ✓ Road Upgrades & Maintenance
- ✓ Bridge & Culvert Sites
- ✓ Earthworks Optimization
- ✓ Cable Logging Analysis



**Produce High Quality  
Road Designs, Fast**



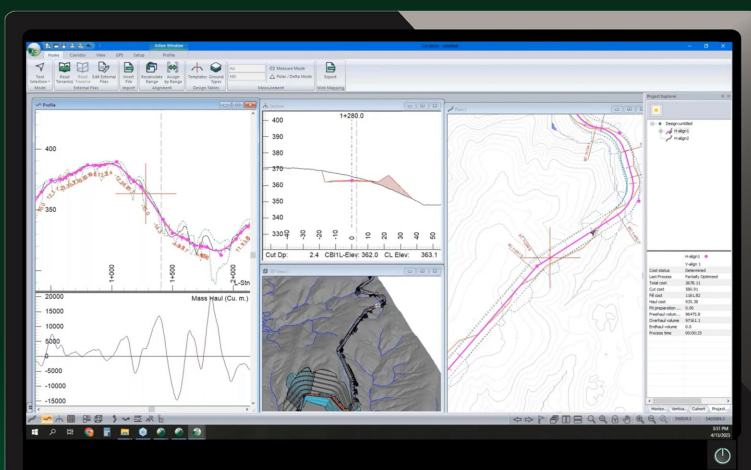
**Optimize  
Earthworks**



**Leverage  
LIDAR**



**Easy to Use  
& Learn**

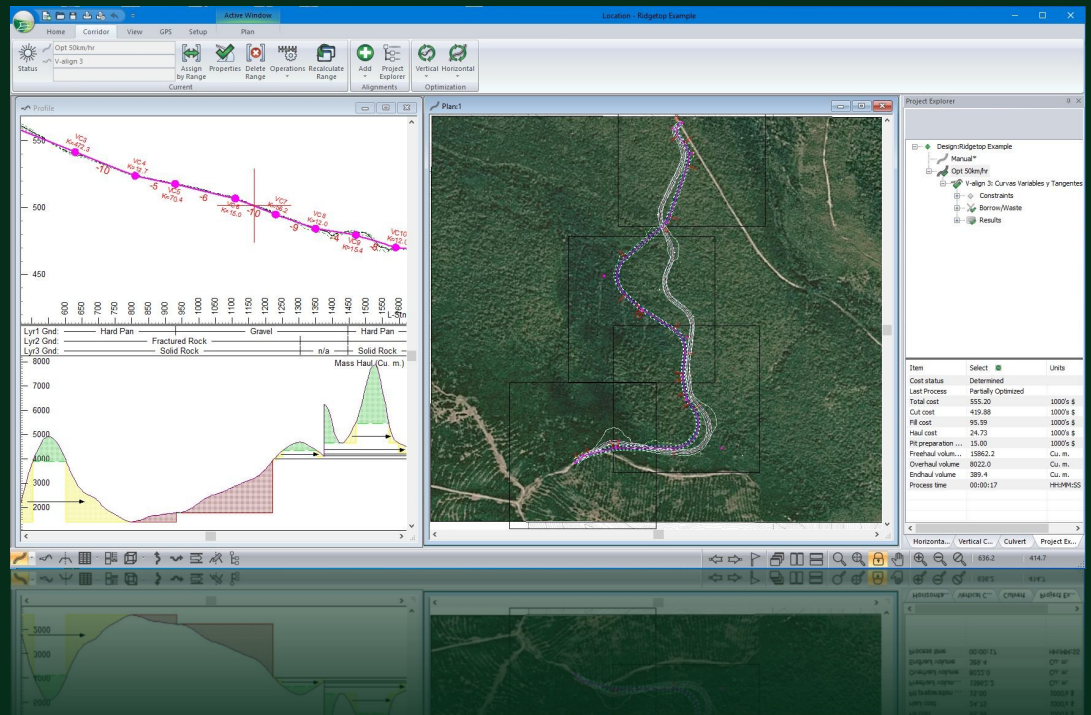


**Softree**  
Engineering an Easier Way

# What is RoadEng?

RoadEng is a desktop software specifically-built for interactive forest road design.

Trusted by forestry companies worldwide, RoadEng makes it easy to plan, analyze, and optimize forest roads.



## Benefits of RoadEng for Forest Road Projects

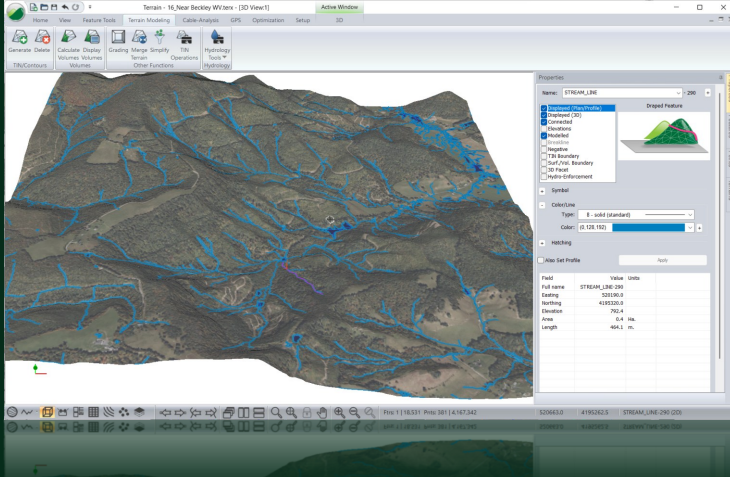
- ✓ **Use AI to Quickly Find & Explore Feasible Road Locations**  
Explore different route options and account for key design variables—saving field time.
- ✓ **Improve Road Safety and Reliability**  
Ensure roads have an appropriate geometry and alignment (grades, curves, etc.) to accommodate the surrounding terrain and meet road-use needs.
- ✓ **Reduce Construction Cost**  
Better account for all design variables, by easily choosing road locations that reduce earthworks requirements and material movement costs.
- ✓ **Calculate Construction Costs as you Design**  
RoadEng models can include ground types, road-building materials and all the associated costs as you design. Make a change and quickly see the change in subgrade construction costs.
- ✓ **Improve Drainage**  
Account for the geometry and placement of culverts, ditches, and crown.
- ✓ **Create Clear Communication & Construction Contracts**  
Clearly define project goals and requirements in quantifiable terms. Ensure clear communication by producing preformatted design packages and digital outputs.
- ✓ **Improve Construction Scheduling**  
By calculating earthworks volumes and material requirements, planners can better predict construction effort, duration, and make informed materials ordering decisions (culverts, geotextiles, etc.).
- ✓ **Reduce Environmental Impact**  
Minimize earthworks, reduce disturbance areas, and ensure proper drainage (reducing sediment delivery).



## Key Functions

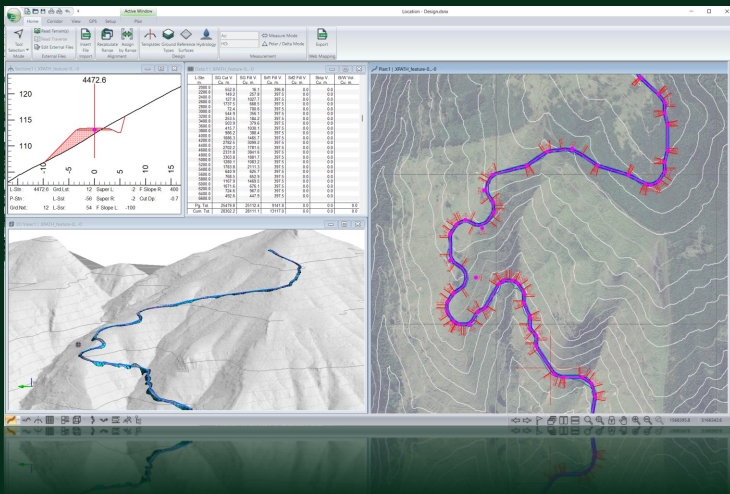
## Terrain Modelling & Hydrology Tools

Use LiDAR &/or other topo data sources to build 3D surfaces. Then leverage built-in hydrology tools to understand surface water & flow.



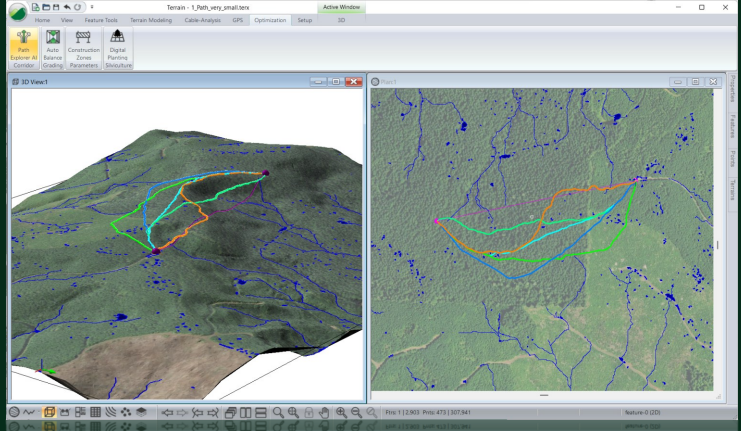
## Easy Geometric Road Design

Design road geometry faster with easy-to-use templates & dynamic editing tools. Understand how the road interacts with the terrain & get quantities.



# Path Explorer AI

Leverage the power of AI tool to quickly evaluate road locations and focus on the best options, saving field time.



## Earthwork Cost Reduction

Use Vertical Optimization to minimize cuts & fills, balancing earthworks. Save 10-30% on subgrade construction costs.



## Additional Features

- ✓ Cable Harvesting Analysis
- ✓ Culvert Editor
- ✓ Fish Passage Design
- ✓ GPS integration
- ✓ Cross Section Template Control
- ✓ Bridge Site Design

- ✓ Grading & Feature Tools
- ✓ Digital Tree Planting Tool
- ✓ Construction Documentation Generator (Multi-Plot)
- ✓ Export to Avenza Maps, GIS & other standard formats
- ✓ Compatible with Metric, Imperial & US Survey Feet
- ✓ Background Ortho Imagery

+ more!

## Designed for Forestry



### Fast

From learning the software to designing roads, processing big data, and implementing improvements — RoadEng helps you move faster at every stage.



### Forestry-Focused

RoadEng is purpose-built for forest engineering, giving you the tools to map, cost, and plan projects without the complexity of traditional CAD.



### Easy to Use & Learn

RoadEng's short learning curve and intuitive tools let you get started immediately — 90% of RoadEng users never require any formal training.

## Used by Leading Forestry Companies Worldwide



West Fraser



## Ways to Check Out RoadEng

Download a 3-Week  
Free **Trial**:



Book a **Demonstration**  
Meeting:



Learn More at  
**[www.softree.com](http://www.softree.com)**



Call us Toll Free at **1.866.519.6222** or **1.604.519.6222** (International)

Email us at **[sales@softree.com](mailto:sales@softree.com)** | Visit us at **[www.softree.com](http://www.softree.com)**

Suite 215 - 1000 Roosevelt Crescent | North Vancouver, B.C. | Canada, V7P 3R4