

# Softree News



Fall 2003

## Editor's Comments

Normally, at this time of year on the B.C. coast, most field engineers are looking forward to spending some quality time in the warm dry office. This year is different. After a long dry summer with unprecedented wild fires, the warm weather lingers on into October. Today the temperature is expected to reach 26° C (79° F). I'm sure we'll pay for this good weather in November and December.

Since we released Version 4 in July sales have been strong and the feedback we have had from customers has been very positive.

Some of the most popular features are reading and writing shape files, large coordinates, survey adjustments and the new culvert editor.

We are now offering both forestry and civil RoadEng® products. The *Forest Engineer* product contains functions relevant for planning forest operations and resource roads. The *Civil Engineer* product includes functions for designing public roads according to AASHTO standards. Although the line between civil and forest engineering is often fuzzy, we believe that by dividing the product into the two disciplines we can better focus its application while retaining its friendly interface.

We are also encouraged by the compliments we have had for Terrain Tools® from a wide range of industries. Terrain Tools has proven that it will work well as either a standalone program or in harmony with other industry standards such as ArcView®.

The future is "full speed ahead". We plan to continue developing and enhancing our products to serve all our customers.

## Training

This fall and winter we will be running courses in RoadEng and Terrain Tools. Courses will be tailored to the expertise and specific interests of the group. Times and places for these courses are included further in this letter.

Contact Wendy Hellofs (866-519-6222) for more information.

### Fall 2003

Nov 18-20, 2003  
RoadEng Training  
Campbell River, BC

Dec 2-4, 2003  
RoadEng Training  
Nanaimo, BC

Dec 9-11, 2003  
RoadEng Training  
Corvallis, OR

Dec 16-18, 2003  
RoadEng Training  
Prince George, BC

### Winter 2004

Jan 6-8, 2004  
RoadEng Training  
Missoula, MT

Jan 13-15, 2004  
RoadEng Training  
Loveland, CO

Jan 27 -29, 2004  
RoadEng Training  
Nanaimo, BC

Feb 3-5, 2004  
RoadEng Training  
Bend, OR

Feb 10-12, 2004  
RoadEng Training  
Corvallis, OR

Feb 24-26, 2004  
RoadEng Training  
St Paul, MN

Mar 2-4, 2004  
RoadEng Training  
Bolthell, WA

## Softree Español

This summer Econ Consulting Ltd, of Merville B.C. has been busy promoting Softree products in Latin America.

In August, Ben Rencoret attended Expo Forestal Mexico XXI, in Guadalajara to introduce RoadEng® and Terrain Tools® to the Mexican market.

In early September, presentations were made to a CORMA delegation in Nanaimo. CORMA (Corporacion de la Madera) represents the major Forest Land Owners in Chile. Interest in RoadEng was high and follow-up training and demonstrations are planned for the Expo Corma event in Chile in November.

More information is available at [www.softree-espanol.com](http://www.softree-espanol.com) or by calling (250) 337-5880.



*Softree Español Booth at Expo Forestal Mexico*

## Software Support Policy – Effective August 2003

1. Version 3.0 products have been retired. Technical support and product downloads are no longer available.
2. Maintenance support contracts on Version 3.1 products are no longer being renewed. If you have a maintenance support contract in place, it will be honored for the term of the contract.

## Small is Beautiful

**Q:** How Big is Softree?

**A:** Small! .....Just 5 employees. We are small because that's the best way to be fast, responsive and flexible. We believe passionately in small companies; unencumbered by large overheads, corporate inertia or layers of administration. Today, small talented companies can produce top quality products. Having worked in both very small companies and enormous multinationals we believe that small companies are simply better. The quality of the response is better, the relationships more productive, the service more personal.

## Did You Know?

### Zooming and Panning the Easy Way

If you don't have a mouse wheel you're missing out on a nifty feature. In V4 it is possible to zoom by simply scrolling the mouse wheel. Similarly, holding down the mouse wheel button and moving the mouse causes the window to pan.

### Volume Calculations Between Stations

Version 4 allows you to calculate volumes in two ways "mid point to mid point" or "station to station" in the Location module. See Location menu Module | Setup | Alignment.

## Maintenance Upgrade

Free maintenance upgrades for Version 4 are available on our web site. In addition to bug corrections, the following enhancements have been added since the first Version 4 release.

- Function to save images from the Terrain program in JPG, TIF or BMP format with an accompanying georeference (world) file.

- Import and export of alignments using Land XML . This allows road alignment data to be moved to other civil/design programs such as Land Desktop.
- User defined parameters allowing for creation and packaging of template components.
- User defined bitmap images for hatching.

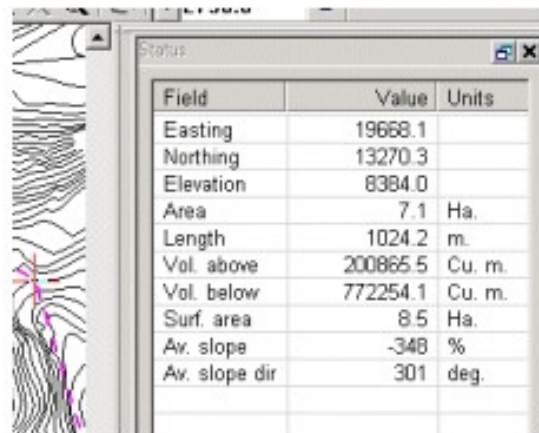
## Tips and Techniques

### Polygon Surface Properties

This example demonstrates how to calculate the surface properties such as area, enclosed volume, average slope and aspect. To do this we will superimpose a 2D polygonal feature on a TIN model and enable its “Surf./Vol.”property. This will cause the surface properties to be calculated during the Terrain model calculation. The data files for this example are in the Tips and Techniques section of our web site (Tip 36).

- 1) Start the Terrain program and open file Sarea2.ter (see Tip 36 on the web). Sarea2.ter contains contours and a polygon feature (dashed line). We will calculate the surface properties of this polygon.
- 2) Select the polygon feature with the mouse. Choose menu Edit | Modify Selected Features | Properties. Select properties (Displayed, Connected, Modelled and Surf/Vol. Boundary). Press OK.

- 3) Choose menu Edit | Calculate Terrain Model. Make sure *Create volume features* is selected. Press OK.
- 4) When the terrain model calculation is complete. Click on the Status Panel Options button, select Add/Remove and then add all the Surface items. Press OK. When the polygon feature is selected the Vol. Above, Vol. Below, Surface Area, Av. Slope and Av. Slope Dir are displayed in the Status window as shown in the figure below.



Field	Value	Units
Easting	19668.1	
Northing	13270.3	
Elevation	8384.0	
Area	7.1	Ha.
Length	1024.2	m.
Vol. above	200865.5	Cu. m.
Vol. below	772254.1	Cu. m.
Surf. area	8.5	Ha.
Av. slope	-348	%
Av. slope dir	301	deg.

Status Window

## Support for Ethiopia

Softree is proud to contribute engineering software to the South Rural Road Authority (SRRA) in Awassa Ethiopia. Through Softree’s assistance, SRRA will be able to work more efficiently and accurately, and also keep up with modern Western engineering tools.



SSRA staff in Awassa Ethiopia

## Thank You Beta Testers !

We would like to thank all the beta testers for their excellent feedback and assistance in testing and improving our software. A special thank you is due to Les Higgs of the B.C. MOF, Greg Zartman of the team at LEI, and Dave Keely formerly of Landmark.

Beta testing can be very frustrating especially in the early stages of development. We greatly appreciate all the help that was provided.

## Web Training

Do you need a little help applying the program to a specific project? Web based training may be the answer.

Web based training is a live on-line presentation with visual display over the Internet and voice narration using a telephone connection. Pre-packaged courses are available or custom courses using your own data to solve a specific problem are also available. The cost is \$100 (CDN) / hour. Note this service requires that you have a broadband internet connection (such as Cable or DSL).

## Why Upgrade To Version 4

### Capability

V4 is loaded with a variety of new features and enhancements to make you more productive. At the same time, we recognize that new features are useful only if they are easy to use. That's why we have taken special care to preserve our user-friendly interface

### Speed

V4 runs faster than previous versions allowing you to work efficiently with large data sets, images, and maps.

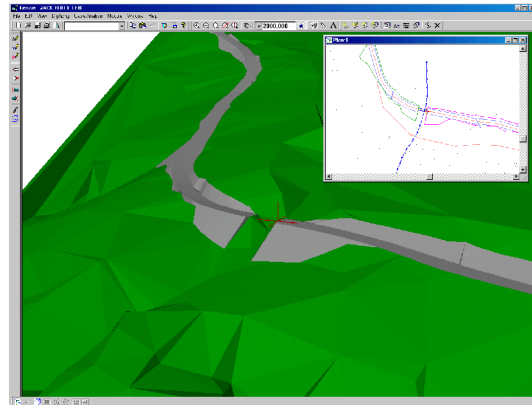
### Accuracy

V4 is more accurate. All calculations are carried out to 12 significant figures ensuring accurate calculations even when large coordinates such as UTM are used. Earthwork quantities and stationing calculations have also been improved.

### Compatibility

As a 32 bit application, V4 is fully compatible with current operating systems such as Windows 9x, 2000, XP and NT. V4 also includes a new file management system which works better in a networked environment.

For more information visit [www.softree.com](http://www.softree.com) or call toll free 1-866-519-6222.



### Softree Technical Systems Inc.

#8 - 650 Clyde Avenue  
West Vancouver, BC  
Canada V7T 1E2  
Phone 604-519-6222 Fax : 604-926-3075  
Email: [mail@softree.com](mailto:mail@softree.com) Web: [www.softree.com](http://www.softree.com)

