

# RoadEng<sup>®</sup> TerrainTools<sup>®</sup>



Our largest & most awesome release in RoadEng's history.

With more new features than any other release, including GPS integration, multiple horizontal alignments and Multi-Plot Report Builder!

## HANDLE MORE LIDAR.

Version 8 is now available as a 64-bit program, making it more stable with large data sets. Working with LiDAR is even easier than before. Plus! New advanced, smarter LiDAR data thinning allows you to thin your point data without losing accurate surface representation.

## WORK IN THE FIELD.

Version 8 is designed to work on all Windows 10-enabled tablets. The new version includes touchscreen gestures, new interface, GPS capability, Bluetooth laser gun connection and more! It's time to take your design into the field.

## FRIENDLIER.

Easier to learn and easier to share. V8 features a new user interface, including ribbon toolbars and dockable panels. It also includes a new single file formats, and new flexible licensing options. Sharing files and sharing licenses just got a lot easier!

## AND MORE!

V8 contains a huge number of feature additions to RoadEng: multiple horizontal alignments, new Multi-Plot Report Builder, customizable reporting & costing, and GPS integration!



## User-Inspired.

Version 8 is inspired by real user feedback. We listen to your support challenges and adapt our software to make it easier to do the stuff you do.

*"You can only manage one corridor per file. It would be great if you could assign an additional profile that drives certain template parameters such as ditch depth."*

*"Please improve your multi-plot and layout options."*

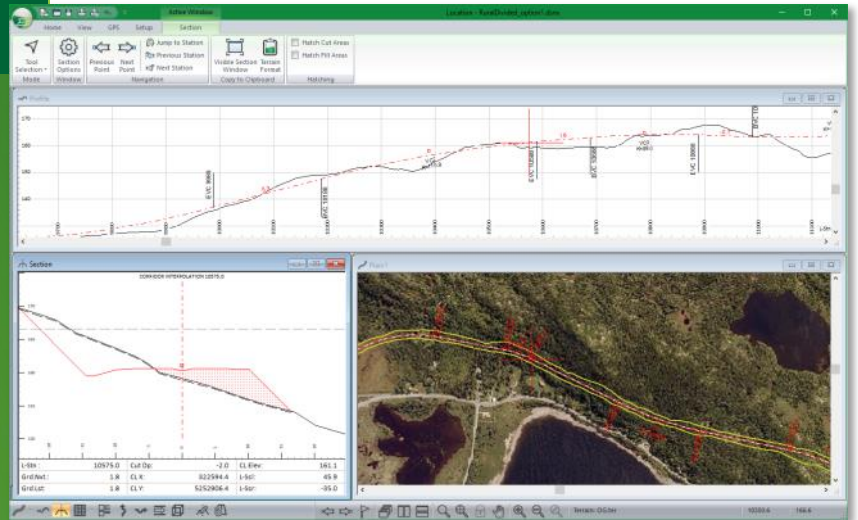
*"Terrain module does not permit more than ten profiles. Location does not allow more than one multi-plot."*

All these, plus more solved in Version 8



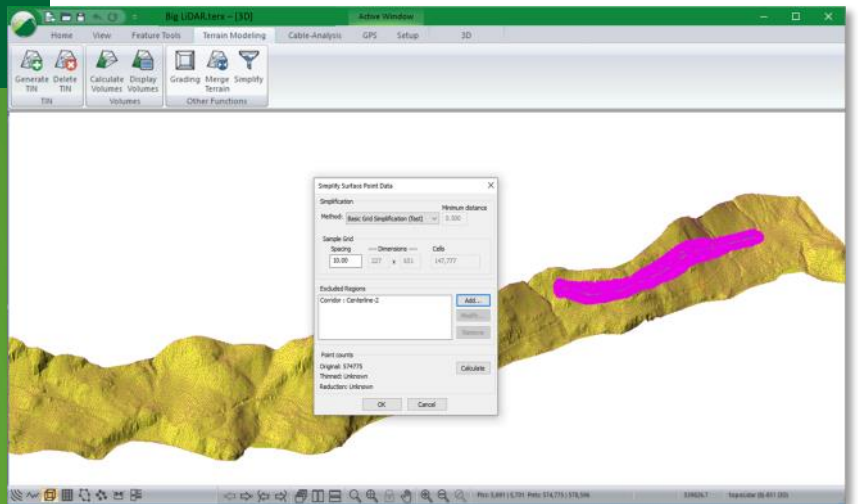
## EASIER USER INTERFACE

- Includes friendlier ribbon bar.
- Bigger icons than the classical menu and toolbar, making it easier to understand for newcomers.
- Improved dockable panels.
- Bottom navigation bar featuring commonly used buttons: zoom tools, window tools.
- Touchscreen gestures for Windows 10 tablets.



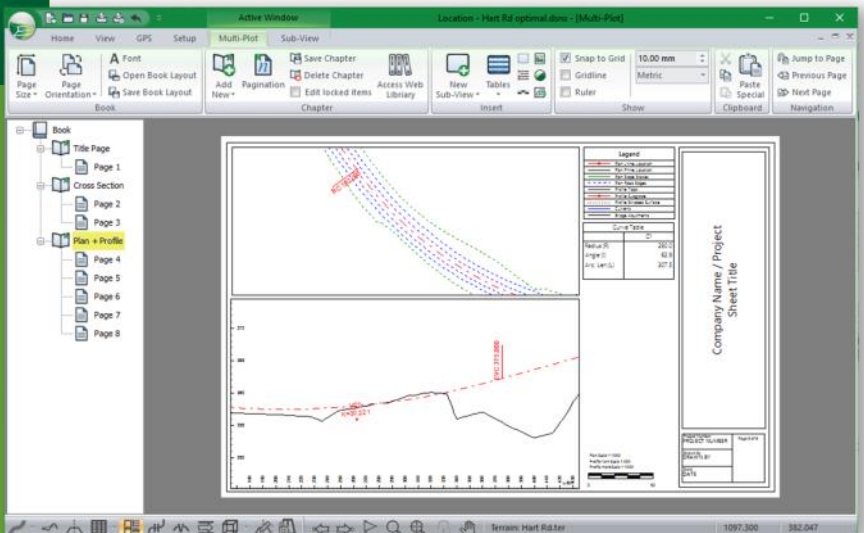
## WORK WITH MORE LIDAR

- Version 8 is available in a 64-bit Version.
- Faster and more stable.
- New recommended point maximum for generating a TIN: increased from 5 to 10 million.
- Three new LiDAR thinning options:
  - Basic grid simplification.
  - Closest point removal.
  - Remove all points (outside of corridor, polygon, etc).

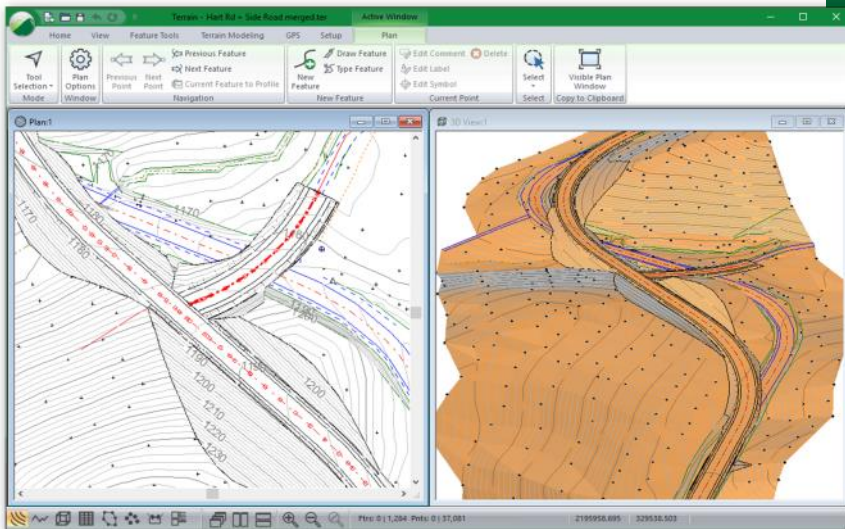


## MULTI-PLOT REPORT BUILDER

- Multiple page types within one document.
- Navigate easily between chapters, and pages through the navigation pane.
- Page-level editing.
- Ability to create title pages.
- Improved image selection control.
- Arrange and align tools.
- Improved insertion of Excel objects.

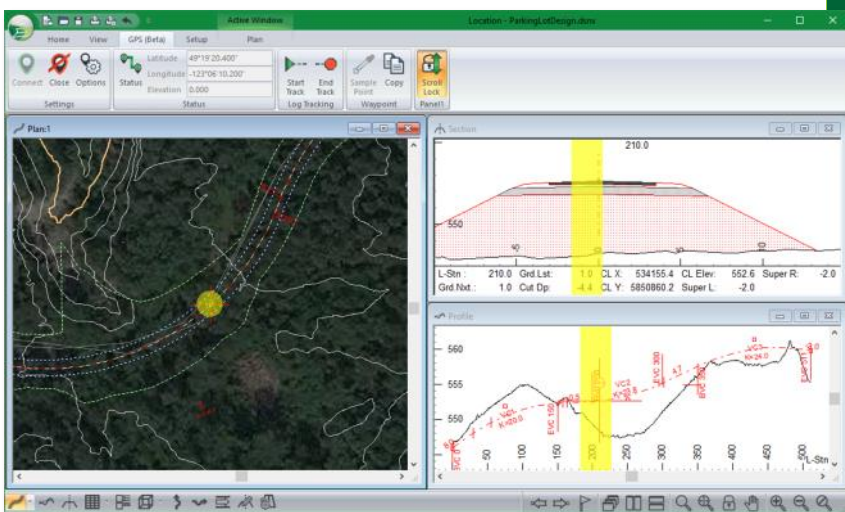






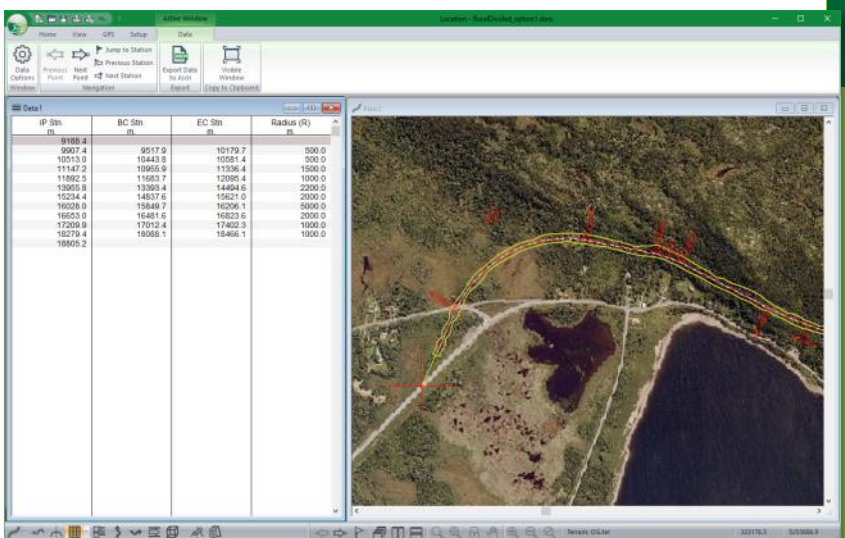
## MULTIPLE HORIZONTAL ALIGNMENTS

- Create more than 1 horizontal alignment in a single design file.
  - Create and visualize road networks.
  - Create twinned alignments.
  - Create ditch alignments.
  - Compare earthwork costs between alignment options.
  - Visualize Intersection locations.
- Easily switch between active alignments using the Alignment Properties panel.



## GPS INTEGRATION

- GPS integration in all modules, for use on a laptop or a Windows 10 tablet in the field.
- Available in Survey Map, Terrain and Location modules.
- Track your position in Plan, Profile, and Section views.
- Great for preliminary planning and design, or during construction. See where you are and make changes on the fly.



## IMPROVED REPORTING

- More control over your reporting with smarter, user-defined parameters.
- Customizable attributes allows you to cost your road your way.
- Configurable data window curve tables gives you more control over what curve data you want to see.

## AND THERE'S MORE...



### Updated Display Compatibility

- Touchscreen gestures.
- 4K display compatibility.
- Updated screen layouts for easier movement between screens and devices.



### Laser Gun Integration

- Survey Map module integration with TruPulse 360R & 360B Bluetooth laser.



### Web Mapping

- Google Earth export updates.
- Inclusion of Sitevisit360.



### Single File Formats

- Move and share files easier with new single format .terx and .dsnx file formats.
- No more component files.



### New Feature Properties Panel

- Easier control of feature properties in the Terrain module.



### More Terrain Profiles

- Create up to 25 profile windows in Terrain (increased from 10).

## NEW LICENSING OPTIONS

Version 8 includes several new flexible licensing to fit your needs –in the office, in the field, in between computers or in network situations.



### CLOUD-BASED LICENSING

- Product key access.
- Easily transferred between computers.
- Internet access only required upon activation/transfer.
- Take a license anywhere without needing a USB key.



### NETWORK LICENSES

- Network access and management with a server executable.
- Borrow licenses from the server & take them out to the field (customizable up to 30 days).
- Handles multiple product types.
- IT Managers can view active and offline licenses.



### USB SECURITY KEY LICENSES

- USB hard lock security key plugs into active computer via USB port.
- No internet connection required.
- If you still like your current USB key license, you can keep it.
- Version 5, 6, and 7 USB key licenses can be upgraded to Version 8 cloud-based and/or network licenses.

Terrain Tools® and RoadEng® are registered trademarks of Softree Technical Systems Inc.  
TruPulse® is a registered trademarks of Laser Technology, Inc. Windows 10, and Microsoft Excel are trademarks of Microsoft Corporation.



[SALES@SOFTREE.COM](mailto:SALES@SOFTREE.COM)

SUITE 215 - 1000 ROOSEVELT CRESCENT  
NORTH VANCOUVER B.C.  
CANADA, V7P 3R4

1-866-519-6222 (TOLL FREE)

INTERNATIONAL: 1-604-519-6222

[WWW.SOFTREE.COM/V8](http://WWW.SOFTREE.COM/V8)